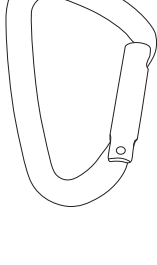




QUICKDRAW MANUAL

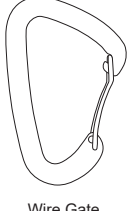


Safety precautions

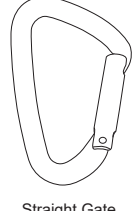
This manual explains how to use the equipment and only appropriate techniques and uses are described. Warning signs tell the potential risks but they don't cover everything. Please read every each warning carefully and use your equipment properly. Any misuse might lead to danger. If you are in doubt, please contact ours.

	Risk of severe injury or death
	Risk of accident or harm
OK!	Appropriate way of use
X	Incorrect way of use

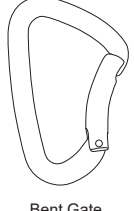
Style



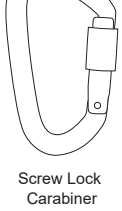
Wire Gate Carabiner



Straight Gate Carabiner



Bent Gate Carabiner

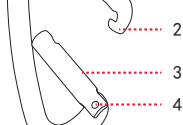


Screw Lock Carabiner

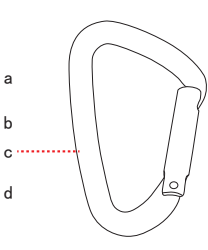
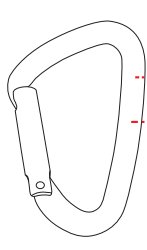


Auto Lock Carabiner

Component Names and Marking

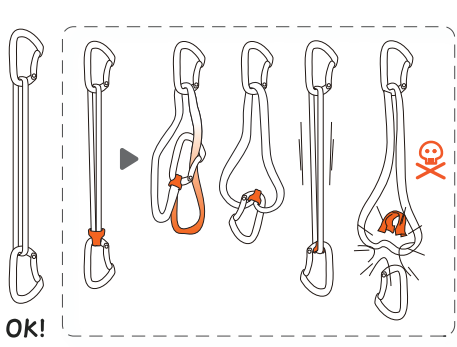


1. Lock body
2. Latch
3. Locking mechanism
4. Rivet



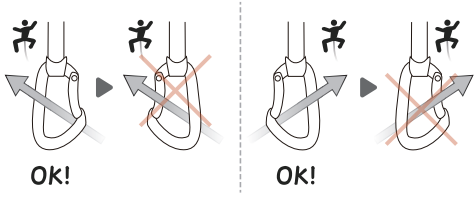
- a. Compliance Standards b. Tensile Strength Marking
c. Name of Responsible Manufacturer or Brand Name
d. Logo Reminding Users to Read Instructions Before Use

Connecting flat belt



OK!

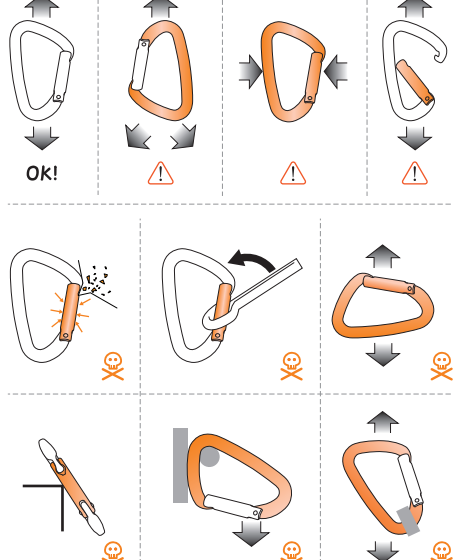
Connecting Rope



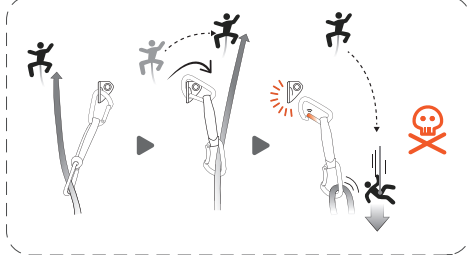
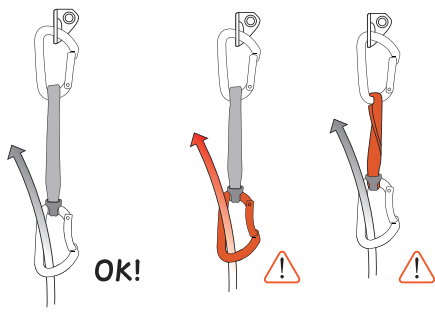
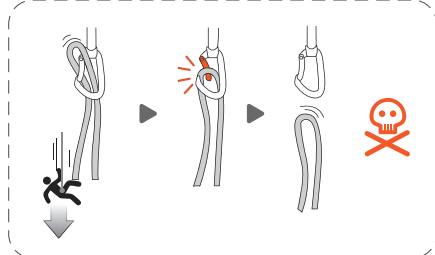
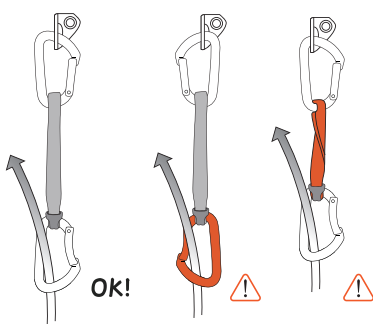
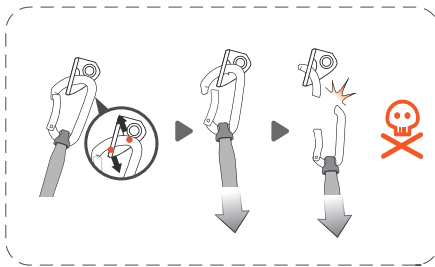
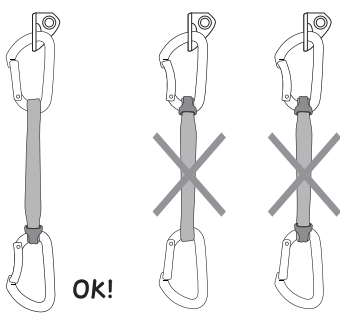
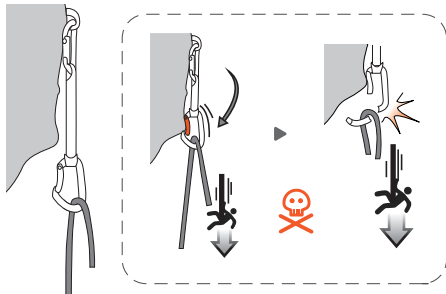
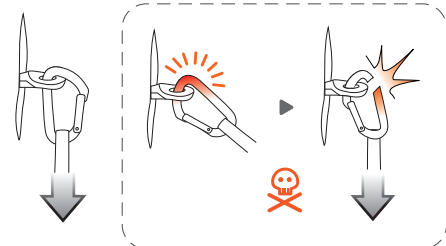
OK!

OK!

Important Notes



Quickdraw positioning



FIELD OF APPLICATION

Personal protective equipment (PPE) used for fall protection from height.

Carabiners and quickdraws designed for mountaineering, climbing, and for vertical activities using similar techniques.

This product must not be pushed beyond its limits. This product must not be used for any purpose other than those described in instructions.

RESPONSIBILITY

WARNING

Activities for which this product is intended are inherently dangerous and may lead to serious injury or death from falls, falling objects, or environmental hazards.

You are responsible for your own actions, decisions and safety.

Before using this product, you must:

- Read and understand all Instructions for Use for this product, and for any equipment used with it.

- Get specific training in the use of this product and associated equipment and in managing the risks of the intended activities.

- Become acquainted with its capabilities and limitations.

- Understand and accept the risks involved.

Failure to follow all instructions and warnings may result in serious injury or death.

This product must only be used by competent and responsible persons, or those placed under the direct and visual control of a competent and responsible person.

You are responsible for your actions, your decisions and your safety and you assume the consequences of same. If you are not able, or not in a position to assume this responsibility, or if you do not fully understand the Instructions for Use, do not use this equipment.

INSPECTION, POINTS TO VERIFY

Recommends a detailed inspection at least once every 12 months.

WARNING: your intensity of use may cause you to inspect your PPE more frequently.

Before each use:

Carabiners: verify the absence of any deformation, cracks, marks, wear or corrosion (on the frame, rivet, and gate). Open the gate and verify that it closes itself automatically and completely when released. The Keylock hole must not be blocked or plugged.

Quickdraw sling: check the condition of the safety stitching (no cut, loose, or worn threads). Look for cuts, wear and damage due to use. Check the condition of the STRING. Verify that the connector/sling assembly is correct in the STRING.

During use:

Verify that the carabiner is always loaded on the major axis.

Make sure the rope is completely clipped into the carabiner, with the gate closed.

Protect the quickdraw sling from sharp edges.

It is important to regularly monitor the condition of the product and its connections to the other equipment in the system. Make sure that all items of equipment are correctly positioned with respect to each other.

PRIMARY MATERIAL: Aluminum

QUICKDRAW POSITIONING

A poorly positioned quickdraw, STRING, or rope can cause unclipping.

Always use the same carabiners for the rope end and the anchor end: a carabiner notched by an anchor can damage your rope.

A knot in a sling reduces its strength. Wet or frozen slings are more difficult to handle.

ADDITIONAL INFORMATION

This product meets the requirements of Regulation (EU) 2016/425 on personal protective equipment.

The melting point of high-modulus polyethylene (140° C) is lower than that of nylon and polyester. High-modulus polyethylene has a low coefficient of friction.

WHEN TO RETIRE THIS PRODUCT:

WARNING: an exceptional event can lead you to retire a product after only one use (depending on the type and intensity of usage, and the environment of usage, for example: harsh environments, marine environments, sharp edges, extreme temperatures, chemicals).

A product must be retired when:

- It has exceeded its lifespan.

- It has been subjected to a major fall or load.

- It fails to pass inspection. You have any doubt as to its reliability.

- You do not know its full usage history (e. g. an illegible product marking).

- It becomes obsolete (for example, due to changes in legislation, standards, technique or incompatibility with other equipment).

Destroy these products to prevent further use.

3-year guarantee

Against any material or manufacturing defect. Exclusions: normal wear and tear, oxidation, modifications or alterations, incorrect storage, poor maintenance, negligence, uses for which this product is not designed.