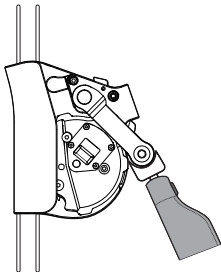




If you have any doubts or difficulties  
in understanding this manual, please contact  
Zhejiang Bingfeng Outdoor Product Co., Ltd.

Phone number: +86 400-8856993

No.19 Xinchao Road, Wangjiang Community, Baiyun Street,  
Dongyang City, Jinhua City, Zhejiang Province, China



H9游龙移动止坠器

H9 wandering Loong

FALL ARRESTER

## Text of the instruction

- It is for H9 Wandering Loong Fall Arrester. This manual illustrates how to use, maintain, store and inspect the equipment.

- This manual includes specific and general instruction of mobile fall arrester, and the general instruction also applies to other metal equipment.

- “Cross sign” in the manual means inappropriate operation. There are many kinds of misuses which can not be all covered in this manual. Only the illustrated ways are allowed.

- Any misuse may lead to severe injury or even death.



Risk of severe injury or death



Risk of accident or harm

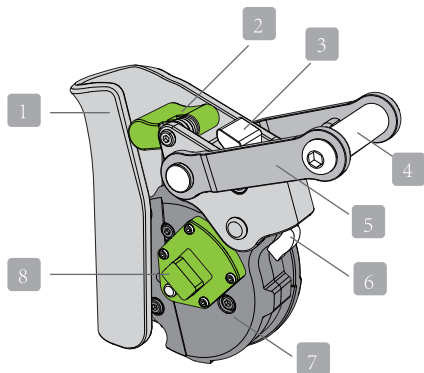
**OK!**

Appropriate way of use



Incorrect way of use

## Nomenclature



(1) Frame

(3) Toothed reset trigger

(5) Clevis

(7) Locking wheel

(2) Rope positioning pin

(4) Connection pin

(6) Safety catches

(8) Arm axle

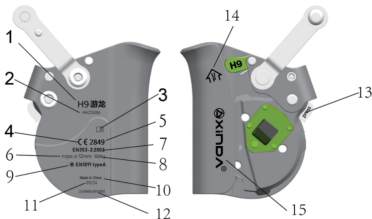
ISO9001 Standards Complied




 **XINDA**®

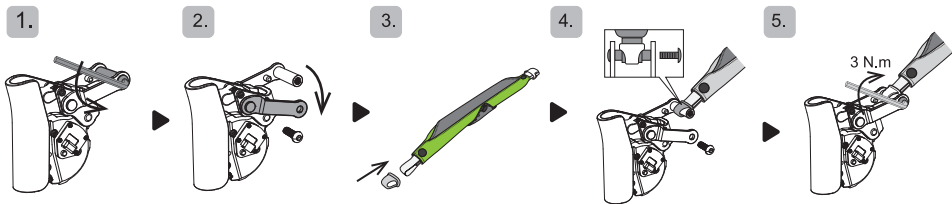
C € 2849

## Marking

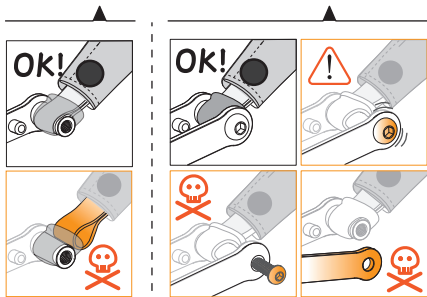
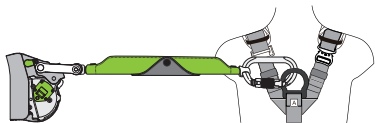


- 1) Product name;
- 2) Type;
- 3)  : Logo to remind the user to read the instructions ;
- 4) **CE** : In compliance with European legislation regulation (EU) 2016/425;
- 5) 2849 : The number of the notified body carries out product quality management according to Module C2;
- 6) rope  $\varnothing$  12mm : Diameter of the compatible rope;
- 7) EN53-2:2002 : European used standard;
- 8) Maximum work load;
- 9) Type of anchor lines to be used;
- 10) MADE IN CHINA: Place of origin is China;
- 11) 05/24 : Month and year of production;
- 12) Tracking code;
- 13) Tips for use;
- 14) Correct orientation;
- 15) Brand name

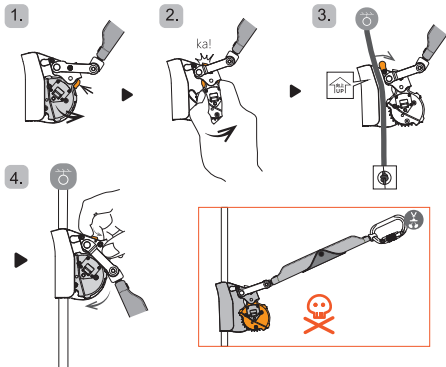




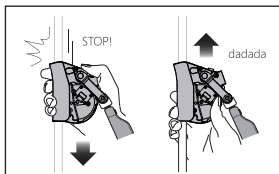
Connect to the harness



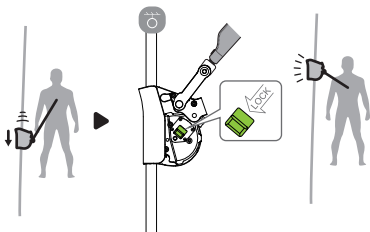
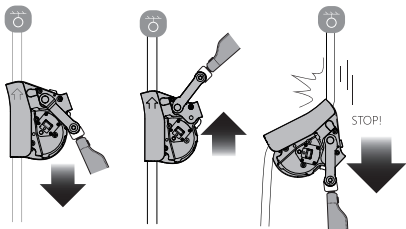
## H9 setup, and function test



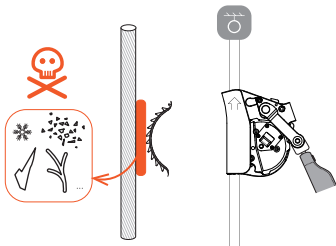
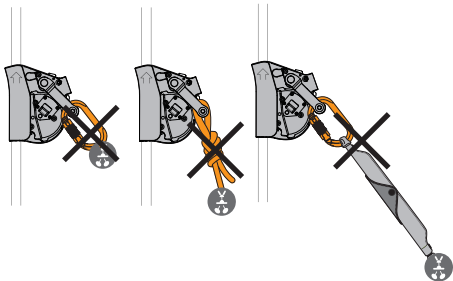
function test

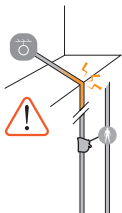
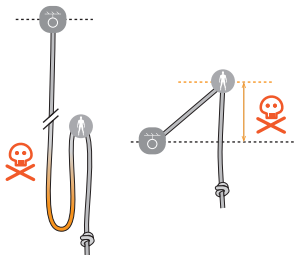


## Working principle



## Precautions for use





## Instructions

### WARNING

●Activities involving the use of this equipment are inherently dangerous and can lead to severe injury or even death. You must be responsible for your actions and decisions.

●Warning: the equipment shall only be used by a person trained and competent in its safe use.

●Read and understand the instructions before use.

Before using this product, it is essential to have got adequate training, understood and mastered the basics and techniques.

●This product must not be used beyond its limits, nor be used for any purpose other than for which it is designed.

If you have any doubts or difficulties in understanding this manual, please contact Zhejiang Bingfeng Outdoor Product Co., Ltd..

Phone number: +86 400-8856993

NO.200 Guangfu Xijie, Fenghuangcommunity,Jiangbei District, Dongyang City, Jinhua City,Zhejiang Province, China

### SPECIFICATION AND APPLICATION

	Guided type fall arresters including a flexible anchor line, type HHZSQ06
Compatible rope and Diameter	Dia. 12mm modle:XDS982112 Material of ROPE: Sheathing:kevlar Core:kevlar
Carabiner	EN362:2004 Class B
Working load limit	100kg
Weight	400g
Standards	EN353-2:2002
Material	7075 aluminum alloy, stainless steel

	H9Youlong'ABSORBER, typeHH-9375
Length	40cm
Working load limit	100kg
Breaking force	<6kN
minimum clearance	>6.1m 【stopping distance+The tearing length of the energy absorber (2.52m) +The average height of the user+ 1 meter safety margin.】
Standards	EN355:2002
Material	polyester, high-modulus polyethylene, Thermoplastic Polyurethane

Mobile fall arrester belongs to PPE (personal protective equipment)which is designed for arrests falls.

XINDA H9 Wandering Loong Fall Arrester are designed and tested based on European rope access techniques.

This product is compliant with Regulation(EU) 2016/425 and EN353-2:2002 .

Notified body which carries out EU certification and product quality management according to Module C2:

INSPEC International B.V. (Notified Body 2849)

Beechavenue 54-62, 1119 PW, Schiphol-Rijk, The Netherlands.

Please check the EU DECLARATION OF CONFORMITY on: [www.xindasafety.com](http://www.xindasafety.com).

Acceptable temperature: -20℃~50℃ .

### Compatibility:

The safety of H9 Wandering Loong Fall Arrester depends on the compatibility with the other elements of the system. Verify that every part of the system works well with each other such as the connection with rope and carabiner. **Warning: components of any complete system shall not be substituted.any dangers that may arise by the use of combinations of items of equipment in which the safe function of any one item is affected by or interferes with the safe function of another.**

Rope: only with the ropes tested during the EU EN 353-2: 2002 certification:XINDA XDS982112 12mm,

Warning: The rope grabbing can be still functional when working with other ropes, but the working load might be lowered greatly.

Any overload or dynamic loading on the rope adjustment device may damage the anchor line.

Carabiner: meet EN362,

Energy absorbers: meet EN355:2002,

Layerd: meet EN354,

Harness: Equipment used with your H9 wandering Loong fall arrester must meet EN 361 harnesses.

Energy-absorbing lanyard: The energy absorber must not be extended (one connector maximum (12 cm maximum length) at each end).

### Anchor

Rope: Use the H9 with 12 mm rope.

The length of the lanyard: 55cm

Verify the absence of any cracks, nicks, deformation, wear, corrosion (on the frame, wheel, arm, clevis).

Verify the condition of the safety catches, and that their return spring works.

Verify that the arm pivots on the axle, and that the return spring works.

Verify that the locking wheel is clean and that the teeth are not worn out. Warning: if one or more teeth are missing, do not use the H9.

If the teeth are dirty, see the paragraph on Cleaning, maintenance.

Verify that the locking wheel rotates smoothly, through one complete revolution in both directions.

Rope: check the condition of the rope according to the manufacturer's instructions. The rope must be retired if it has held a fall, if the core seems deformed, or if the sheath is damaged or stained.

### During use

It is important to regularly monitor the condition of the product and its connections to the other equipment in the system. Make sure that all items of equipment are correctly positioned with respect to each other.

Beware of foreign objects that can prevent the locking wheel from pressing against the rope, or from turning. Protect your H9 from splashes while working (paint, cement...). Make sure that the locking wheel is always engaged on the rope.

### Working principle

At moderate speeds, the locking wheel turns freely in both directions. When a rapid downward movement occurs, the locking wheel stops rotating and the rope is locked by being pinched between the wheel and the frame.

### H9 setup, and function test

Preparation:

Use only your H9's original screw. Apply thread lock to the screw before assembly.

Install the energy absorber and close the clevis. Tighten, check the correct positioning of the axle and the screw tightness.

Install the guided typefall arrester to a reliable anchor point:

Upper Anchor Point Fixing (Top)

The anchor rope is connected and fixed to the upper anchor point by means of a locking device.A tension check shall be performed after fixing to ensure no slippage.A wear-resistant corner guard / sleeve shall be installed at the point where the anchor rope contacts the structural edge to prevent cutting.

Lower Fixing / Tensioning

A terminal fitting or counterweight (e.g. 5–10 kg weight) shall be fitted at the lower end to keep the anchor rope vertically tensioned.

open the safety catches to place the rope in the frame, close the catches to engage the locking wheel on the rope.

How to connect to other components of a fall arrest system: connect the device to the chest or back A point of the harness via the Carabiner. A recommendation to use a front attachment is require.

Warning: Danger of death if the H9 is positioned upside down on the rope.

Attach and detach from the flexible anchor line:

Firstly to open the gear, place the index knuckle of your finger against the PRESS button and trigger your thumb to the right to open the gear until you hear a click, place the anchor rope into the rope slot and trigger the upper trigger to reset the crenellations. The anchor rope can be removed in the same way.

Inspect the equipment before use to ensure it is in a serviceable condition and can operate normally.

Perform a function test for each installation.

Unlocking: after the function test, unlock the wheel to enable normal movement on the rope.

Locking function: use the wheel's locking button to prevent the H9 from moving downward on the rope. Warning: in the case of accidental suspension on a locked H9, it cannot be unlocked while under load.

### Precautions for use

Possible to create a travel-stop by tying a knot in the rope.

As you progress, regularly check that the rope is sliding properly in the H9, to avoid creating a loop of slack that could increase the potential fall distance. Maximum allowable fall distance: twice the length of the energy absorber (including connectors).

The mobile fall arrester must not be connected to more than one rope.

The mobile fall arrester must not be connected to more than one user.

Working load : 100 kg.

Do not use the mobile fall arrester when the user is positioned on an unstable surface, fine grain material or particulate solids such as sand or coal.

To move the H9 along the rope, do not hold it with your whole hand; pull it using the energy absorber.

A dynamic overload can damage the rope. If the H9's rope is loaded, the user must be equipped with another backup system.

Usage on an incline:

WARNING: in case of a slow slide on a low-angle roof, for example, the H9 may not activate immediately.

Be sure to tie a stopper knot in the rope if there is a risk of hitting an obstacle.

### SAFE DISTANCE : 6.1m

safe distance is the minimum amount of clear space below the user that prevents the user from hitting an obstacle in the event of a fall.

SAFE DISTANCE TAKES INTO ACCOUNT:

- The length of the fall.
- The H9's stopping distance.
- The tearing length of the energy absorber.
- The average height of the user.
- A safety margin.

The rope's elasticity (E) varies according to the situation and must be added to your safe distance calculation. The values presented are based on theoretical estimations and on fall tests using a rigid mass. In a fall-arrest system, take into account the length of any connectors that will have an effect on the fall distance.

### Additional safety information ;

● The user's health and body condition must be fit for working at heights. Unconscious suspension at height can lead to severe injury or even death. Ensure that a rescue procedure is in place.

● That the total length of a sub-system with an energy absorber including lanyard, terminations and connectors shall not exceed 2 m (e.g. connector plus lanyard plus energy absorber plus connector).

● Use only your H9's original screw. Apply thread lock to the screw before assembly.

● Install the energy absorber and close the clevis. Tighten, check the correct positioning of the axle and the screw tightness.

● When the adjustable anchor line is loaded by the full weight of the user, this becomes a working line and a safety line should be used in addition for optimum safety of the user.

● Warning: In a rope access system, it is essential to use a back up device and check the required clearance below the user in order to avoid any impact with the ground or with an obstacle in case of a fall.

● In the industrial use, the breaking load of a single anchor point must be 12kN at least or meet the standards of EN 795.

● In a safety system, the weakest component determines the strength of the whole system.

● Avoid that the rope and other braided fabric rub against sharp edges or rough surfaces.

● A risk assessment is needed and protection measures should be taken before use.

● Warning: Make sure that the anchor point is correctly positioned, in order to limit the risk and the length of a fall.

● Warning: a rescue plan shall be in place to deal with any emergencies that could arise during the work.

### Life span, regular inspection and retirement:

Life time : 10 years from manufacturer date.

● The equipment may need to be retired only after one use because of misuse, accidents or compatibility problems.

● The practical lifespan depends on the type and intensity of usage, harsh environment (marine environment, extreme temperatures, sand and mud etc). Equipment check has great effect on the lifespan.

● WARNING: an exceptional event can lead you to retire a product after only one use, depending on the type and intensity of usage and the environment of usage (harsh environments, marine environments, sharp edges, extreme temperatures, chemicals...).

● WARNING: ensure that your products do not rub against abrasive or sharp surfaces.- Medical conditions (e.g. cardiac disease) could affect the safety of the equipment user in normal and emergency use. WARNING: inert suspension in a harness can result in serious injury or death.

● The instructions for Use for each item of equipment used in conjunction with this product must be followed.- The Instructions for Use must be provided to the user of this equipment, in the language of the country where the equipment is used.- Make sure the markings on the product are legible.

● The comprehensive inspection is required once every 12 months minimum, apart from normal check before use, during use and after use. The greater the intensity of use, the more checks are needed. Record the results of the inspection.

WARNING: The equipment must undergo regular periodic examinations, and the safety of users depends on the continued efficiency and durability of the equipment.

EQUIPMENT RECORD				
Product: Guided type fall arresters including a flexible anchor line				
User name				
Model&type/identification HHZSQ06	Trade name XINDA	serial number		
Manufacturer XINDA	Address China	Tel, fax, email and website +86 400-8856993 <a href="mailto:info@xindaoutdoor.com">info@xindaoutdoor.com</a> <a href="http://www.xindasafety.com">www.xindasafety.com</a>		
Year of manufacture/life expiry date		Purchase date	Date first put into use	
Other relevant information: For use with other components within personal fall arresting systems such as EN361 harness, EN362 carabiner, EN355 energy absorber integral with a lanyard				
PERIODIC EXAMINATION AND REPAIR HISTORY				
Date	Reason for entry (periodic examination or repair)	Defects noted, repairs carried out and other relevant information	Name and signature of competent person	Periodic examination next due date

EQUIPMENT RECORD				
Product: H9Youlong'ABSORBER				
User name				
Model&type/identification HH-9375	Trade name XINDA	serial number		
Manufacturer XINDA	Address China	Tel, fax, email and website +86 400-8856993 <a href="mailto:info@xindaoutdoor.com">info@xindaoutdoor.com</a> <a href="http://www.xindasafety.com">www.xindasafety.com</a>		
Year of manufacture/life expiry date		Purchase date	Date first put into use	
Other relevant information	For use with other components within personal fall arresting systems such as EN361 harness, EN362 carabiner, EN354 lanyard			
PERIODIC EXAMINATION AND REPAIR HISTORY				
Date	Reason for entry (periodic examination or repair)	Defects noted, repairs carried out and other relevant information	Name and signature of competent person	Periodic examination next due date

●The inspector must be competent or authorized by the manufacturer.

**WARNING:** Periodic examinations are only to be conducted by a competent person for periodic examination and strictly in accordance with the manufacturer's periodic examination procedures.

●Inspections included:

-Check if the products are free of corrosion, melting, cracks, wear, deformation or stain;

-Check if the attachment points are overworn(0.5mm at most);

-Check the effectiveness of the springs and pivots;

-Check if the cam teeth are worn greatly;

-Check the functionality of the rope clamp;

-Check if the markings are illegible;

You should maintain or retire the equipment, or hand to the manufacturer for further inspection when the results are negative such as deformation, malfunction of the pivots.

●Information included on the inspection manual

Model number/data matrix/purchase date/manufacture date/first time to use/standards/inspection date/records(malfunction, condition, user's usage record) /results and suggestions(to retire the equipment or not)/next inspection date/inspector's data(name and contact).

●**When to retire your equipment:**

-You don't know its usage history;

-You doubt about its performance, strength or safety;

-It fails to pass PPE inspection;

-Malfunctions are found;

-It fails to meet updated regulations or standards;

-It has been subjected to a major fall or load;

How to retire your equipment:

Mark it with irremovable labels or destroy it as to prevent further use. For instance, drill or cut it. Or return it to the manufacturer for disposal.

**Responsibilities:**

●You are responsible for your actions and decisions. If you can not take the responsibilities, don't use it.

●Warning: If there is any doubt about the safety condition of a system or component, it should be replaced immediately. Replacement should be carried out by the manufacturer or other competent person.

●You must take training course including theory and practice, basics for working at height, proper ways to use and relevant safety system knowledge before use.

●Warning: When it is resold to other countries or regions, the instruction manual must be made in local languages.

●XINDA is not responsible for any direct or indirect non-quality induced consequences.

**Storage and transport:**

Remaining fluid and other stain on whole equipment must be rinsed and dried and then stored in a dry environment, 10℃-30℃. The whole equipment must not come into contact with abrasion, loading, chemicals, sharp edges or heat source etc as those are inherently harmful. Whole equipment must be specially stored in the container and transported in compliance with storage requirements.

The use and storage of the equipment is suggested to be taken care of by accountable people.

**Maintenance:**

**-Cleaning/Disinfection: Use clean water(20℃) and soft brush to rinse the external and internal of the product.**

**No high-pressure water.**

**No industrial-grade cleansers.**

**Rinse afterwards and dry it naturally. No heat drying.**

**Warning: Please strictly follow the cleaning procedures, incorrect cleaning will affect its performance.**

**-Long time use of the equipment will reduce the lubrication of the parts such pivots. Lubricating oil or grease is suggested to be in use.**

**-warning: when the equipment becomes wet, either from being in use or when due to cleaning, it shall be allowed to dry naturally, and shall be kept away from direct heat.**

Warning: No modification, alternation or improper maintenance is allowed. It can only be repaired in the XINDA factory.

**Traceability:**

The code is used for product tracing.

Meaning: For instance, 23150300J001: 23: Manufactured on year of 2023;150300500J:order number of the Manufacturer ;

001: Product increment.

**Limited warranty:**

XINDA provides a 3-year warranty against any material or manufacturing defects. Exclusions: normal wear and tear, deformation, oxidation, modifications or alterations, misuses, incorrect storage, poor maintenance, uses for which this product is not designed.